

The colours and textures represented in this digital image are provided as a reference only. Whether seen on a screen or printed, they cannot in any way match the actual item. We recommend procuring an actual sample when specifying these products.

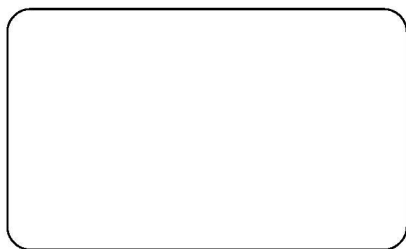


502-2150 **Raspberry**

■ Emerging colours

Promoting a strong urban harmony, featuring neutral discreet shades, such as Mastic, Concrete and Cornflower.

Aluminium and Shifting Grey being more sophisticated shades.



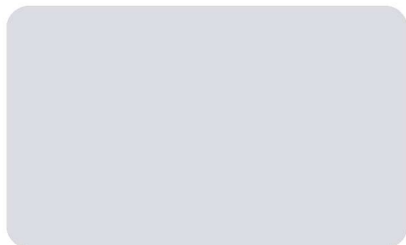
502-8102 **White**



502-2160 **Lagoon**



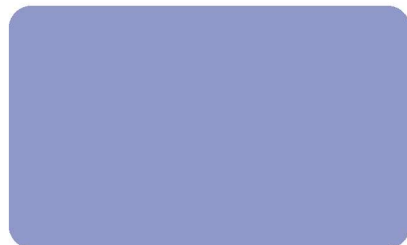
502-2167 **Concrete**



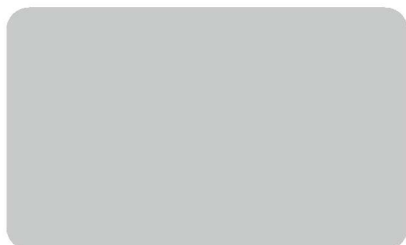
502-2144 **Mastic**



502-2163 **Turtledove**



502-2159 **Cornflower**



502-1499 **Shifting grey**



502-2168 **Aluminium**

■ Design illusion

Contemporary architecture ventures towards dynamic, almost fluorescent colours that have a strong presence.

This bright, saturated colour harmony strongly reflects a current trend, in which every contrast is possible.



502-2156 **Spruce**



502-8056 **Tennis**



502-2157 **Aniseed**



502-2172 **Carrot**



502-8204 **Mandarin**



502-2166 **Buttercup**



502-2165 **Blackcurrant**



502-2150 **Raspberry**

■ Evolving with time

The first impression is that these colours appear to be taken directly from nature's palette; evoking the continuous cycle of the plant world. Looking deeper,

these colours appear smarter and more refined, reminding us of certain Art Nouveau paintings.



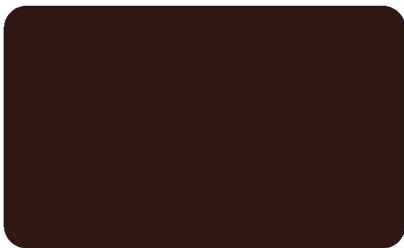
502-8284 **Maroon**



502-2149 **Beetle**



502-2158 **Moss green**



502-2137 **Walnut stain**



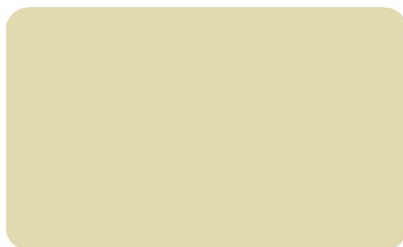
502-2138 **Dead leaf**



502-2012 **Pepper**



502-2173 **Tuscan**



502-2145 **Gold**

■ Body language

A palette taking inspiration from a variety of flesh tones, from Champagne, through Pale Pink to Cocoa.

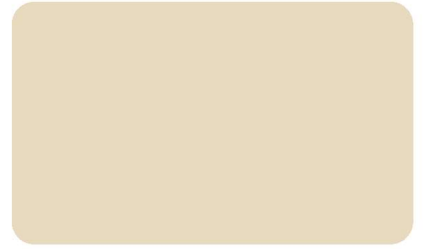
These colours are soft and mellow, reflecting neutrality, remaining discreet, sober and subtle.



502-2148 **Cocoa**



502-2141 **Camel**



502-8861 **Vanilla**



502-2164 **Violet**



502-2151 **Pale Pink**



502-1013 **Chick**



502-2135 **Sandy beige**

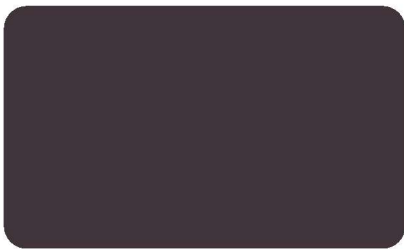


502-8341 **Champagne**

■ Mayhem

Enter a strange satanic nocturnal world. Colouring is ambiguous, Slate changes from black to violet...

It's perturbing to see blood reds in the range.



502-2162 **Slate**



502-1125 **Marine**



502-2161 **Night blue**



502-2136 **Onyx**



502-8450 **Black**



502-2171 **Boulder**



502-2152 **Velvet red**



502-8255 **Poppy**